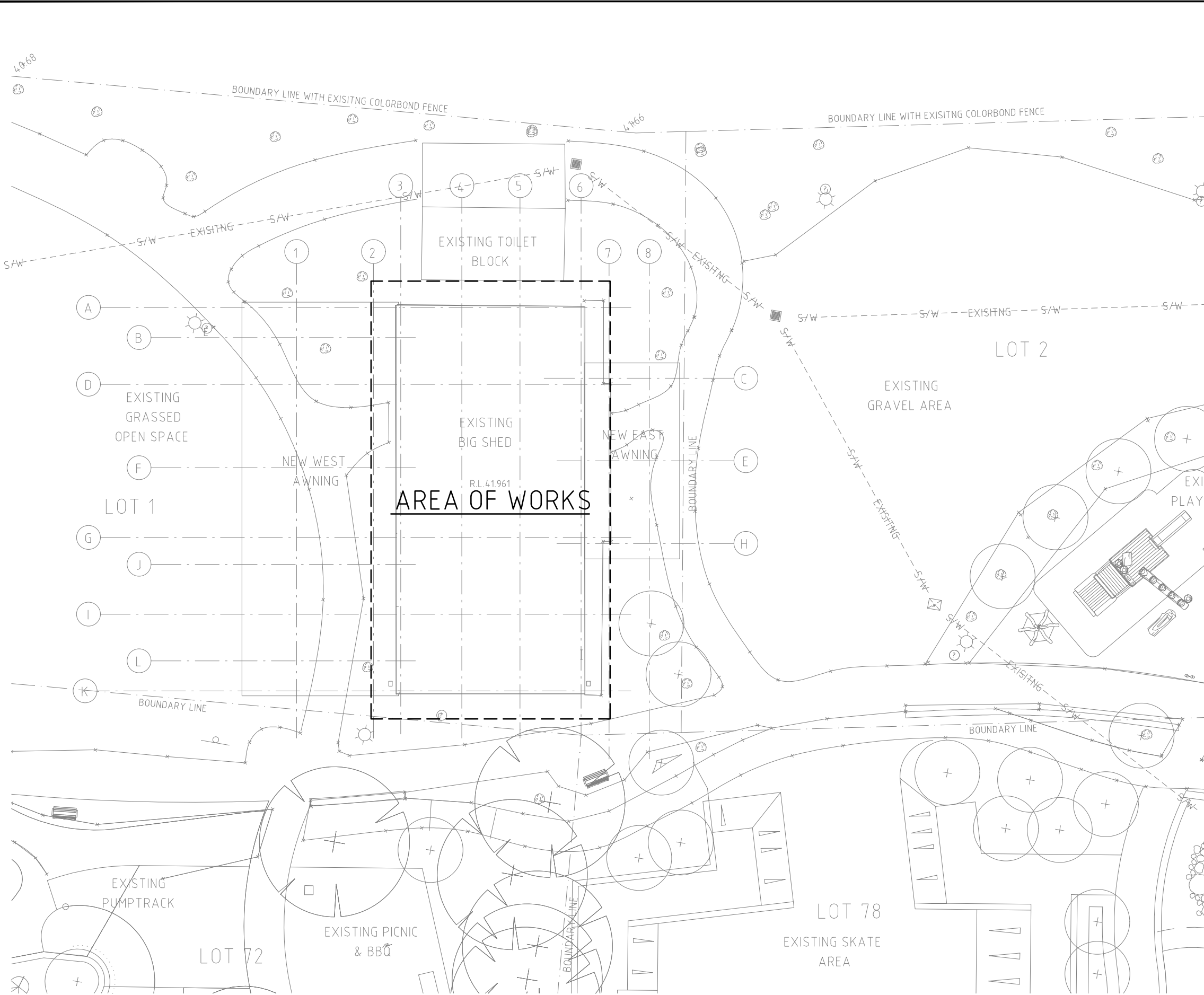


NOTES
 Copyright of this drawing is reserved by HUTCHINSON ASSOCIATES.
 This drawing shall only be read in conjunction with other relevant drawings.
 Liaise with all other trades for accurate co-ordination of services.
 Site check all dimensions before preparation of working drawing or commencement of work.
 This drawing is the property of HUTCHINSON ASSOCIATES and shall be returned at their request.
 This drawing shall not be used for any purpose without authority from HUTCHINSON ASSOCIATES.



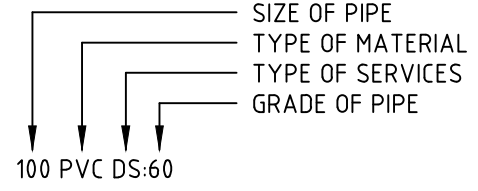
ABBREVIATIONS

FFL	FINISHED FLOOR LEVEL
GB	GAS BOTTLES
HWU	HOT WATER UNIT
IO	INSPECTION OPENING
PVC	POLYVINYL CHLORIDE
RDG	RELIEF DISCONNECTOR GULLY
SK	SINK

LEGEND

WD	WASTE DRAIN
DS	SEWER DRAIN
DV	VENT PIPE
WC	COLD WATER
WH	HOT WATER
G	GAS SERVICE

SERVICES ANNOTATION



NOTES

1. REFER TO ARCHITECT DRAWINGS FOR EXACT LOCATION OF FLOOR WASTES, HWU's, TAPWARE, ETC.
2. PHYSICALLY VERIFY EXACT LOCATION OF EXISTING SERVICES ON SITE BEFORE COMMENCING ANY NEW WORK.
3. RECHECK ALL NOMINATED INVERT LEVELS ON SITE TO AVOID CLASHES WITH STRUCTURAL ELEMENTS AND SERVICES OF OTHER TRADES BEFORE COMMENCING WORK.
4. ALLOW FOR ALL HOT, COLD AND GAS BALL VALVES TO HOT WATER UNIT.

ISS	REV	DATE	DESCRIPTION	MAH/MAH/DSN	APP
1	-	21.11.24	ISSUED FOR CDC	MAH/MAH/DSN	APP

Architect
MCG Architects Pty Ltd
 The Stage, Old Railway Institute Building
 62 Wittenoom Street, Bunbury, WA, 6230
 T: (08) 97916993
 F: (08) 9328 3266
 E: reception@mccgarchitects.com.au

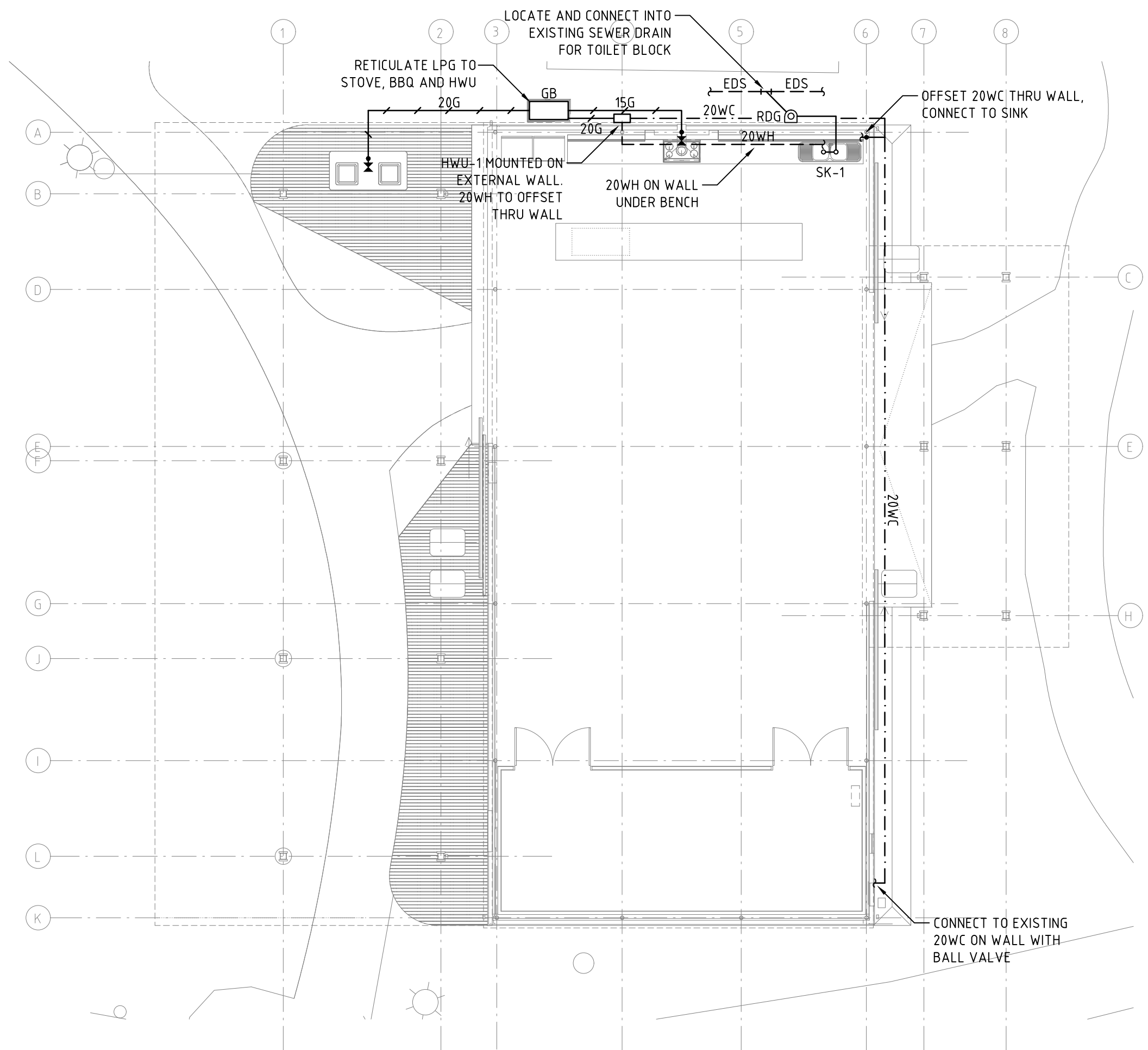
Consultant
Hutchinson Associates
 International plumbing & hydraulic consultants
 1st Floor, Unit 1/22 Miford Street
 EAST VICTORIA PARK WA 6101
 Telephone: (61.8) 9328 9155
 Facsimile: (61.8) 9328 3266
 E-Mail: info@hutchass.com.au

Project Title
BIG SHED
SOUTH WESTERN HIGHWAY,
WAROONA WA 6215

Drawing Title
HYDRAULIC SERVICES
SITE PLAN

Date: October 2024	Drawn: RM	Designed: MAH	
Scale: 1:200	Sheet Size: A3	Checked: MAH	
Project No.: 24.25	Drawing No.: HS.01	Issue: 1	
2425H001.DWG		21/11/2024 2:07:45 PM	

NOTES
 Copyright of this drawing is reserved by HUTCHINSON ASSOCIATES.
 This drawing shall only be read in conjunction with all other relevant drawings.
 Liaise with all other trades for accurate co-ordination of services.
 Site check all dimensions before preparation of working drawing or commencement of work.
 This drawing is the property of HUTCHINSON ASSOCIATES and shall be returned at their request.
 This drawing shall not be used for any purpose without authority from HUTCHINSON ASSOCIATES.



SCHEDULES

1 FIXTURE SCHEDULE

NOTE: ALL ITEMS ARE TO BE AS SPECIFIED OR EQUALLY APPROVED AS BY THE SUPERINTENDENT.

CLARK ADVANCE STAINLESS STEEL SINK DOUBLE BOWL, NOMINALLY 1530 LONG, ONE TAPHOLE, COMPLETE WITH FIXING BRACKETS, WASTE OUTLET, STOPPER, 50 PLASTIC P/TRAP AND DROPWASTE (SK-1).

2 TAPWARE SCHEDULE

NOTE: ALL ITEMS ARE TO BE AS SPECIFIED OR EQUALLY APPROVED AS BY THE SUPERINTENDENT.

RAM MYUNA CHROME PLATED HOT AND COLD SINK MIXER WITH 225 SWIVEL OUTLET (SK-1).

CHROME PLATED RIGHT ANGLE MINI STOPS WITH STAINLESS STEEL FLEXIBLE CONNECTOR AND WALL PLATE (SK-1).

3 HOT WATER UNITS

NOTE: ALL ITEMS ARE TO BE AS SPECIFIED OR EQUALLY APPROVED AS BY THE SUPERINTENDENT.

RHEEM 12 LITRE EXTERNAL CONTINUOUS FLOW GAS HOT WATER UNIT ON WALL. FLOW = 12 L/M, GAS = 94 MJ/H, TEMPERATURE PRESET TO 50°C (HWU-1).

ISS/REV	DATE	DESCRIPTION	MAH/MAH/DSN/APP
1	21.11.24	ISSUED FOR CDC	MAH/MAH/DSN/APP

Architect
MCG Architects Pty Ltd
 International plumbing & hydraulic consultants
 The Stage, Old Railway Institute Building
 62 Wittenoom Street, Bunbury, WA, 6230
 T: (08) 97916993
 F: (08) 9328 3266
 E: reception@mcgarchitects.com.au

Consultant
Hutchinson Associates
 international plumbing & hydraulic consultants
 1st Floor, Unit 1/22 Milford Street
 EAST VICTORIA PARK WA 6101
 Telephone: (61 8) 9328 9155
 Facsimile: (61 8) 9328 3266
 E-Mail: info@hutchass.com.au

Project Title
BIG SHED
 SOUTH WESTERN HIGHWAY,
 WAROONA WA 6215

Drawing Title
HYDRAULIC SERVICES
 SEWER DRAINAGE
 LAYOUT

Date	October 2024	Drawn	RM	Designed	MAH
Scale	1:100	Sheet Size	A3	Checked	MAH
Project No.	24.25	Drawing No.	HS.02	Issue	1
2425H001.DWG				21/11/2024 2:07:45 PM	