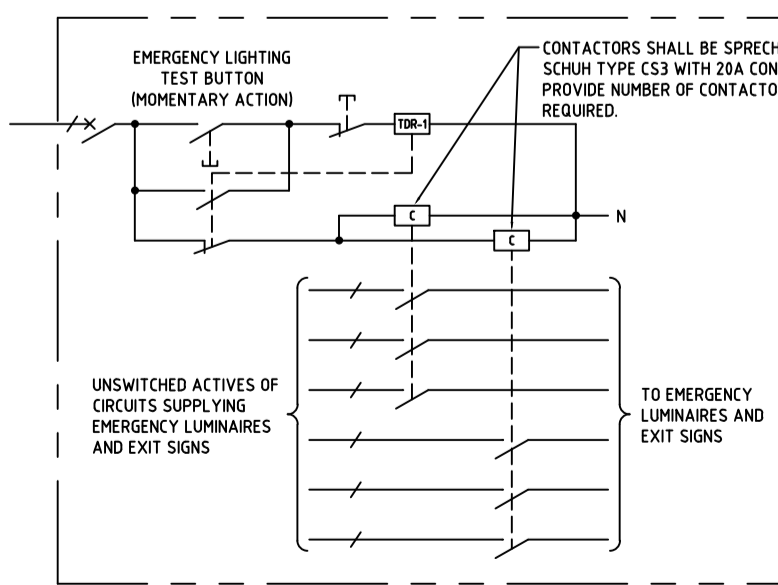


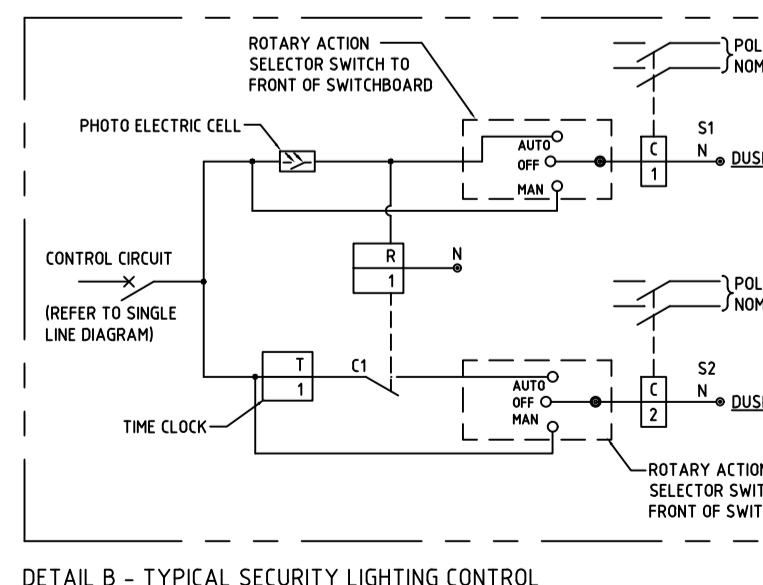
NOTES

- UNLESS OTHERWISE INDICATED ALL COLOURS OF LUMINAIRES MUST BE SELECTED BY THE SUPERINTENDENT PRIOR TO MANUFACTURE.
- ALL LED LAMPS UNLESS OTHERWISE INDICATED SHALL BE 4000K.
- ALL LOW VOLTAGE LAMPS SHALL BE COMPLETE WITH ELECTRONIC MOUSE TRANSFORMERS.
- ALL PITS (ACO TYPE) LISTED SHALL HAVE LIDS FLUSH MOUNTED TO ADJACENT SURFACE FINISH WITH A CONCRETE COVER SURROUNDING THE PIT. ALL PITS SHALL BE INSTALLED ON A 200mm BED OF BLUE METAL FOR EASY ACCESS OF DRAINAGE.
- ALL EXTERNAL LUMINAIRE EXPOSED FIXINGS SHALL HAVE TORX SWAKE EYE OR TORX TAMPERPROOF 316 GRADE STAINLESS STEEL SCREWS.
- ALL SUSPENDED LUMINAIRES SHALL BE STAINLESS STEEL WIRE UNLESS OTHERWISE INDICATED.
- REFER TO ARCHITECTURAL FIT OUT & WALL ELEVATION DRAWINGS FOR EXACT LOCATION FOR ALL EQUIPMENT PRIOR TO PROGRESSING WITH ANY INSTALLATION.
- THE ELECTRICAL CONTRACTOR SHALL SUPPLY AND INSTALL POWER FROM THE EXTERNAL CONDENSER UNIT TO THE INTERNAL (INDOOR) UNIT TO ALL MECHANICAL EQUIPMENT. REFER TO MECHANICAL DRAWINGS FOR LOCATIONS AND POWER REQUIREMENT FOR INTERNAL (INDOOR) UNIT EQUIPMENT.
- THE ELECTRICAL CONTRACTOR SHALL SUPPLY AND INSTALL POWER ALL HYDRAULICS EQUIPMENT AS DETAILED ON THE HYDRAULICS DRAWINGS AND INCLUDE THEM IN HIS TENDER PRICE. REFER TO THE HYDRAULICS DRAWINGS FOR POWER REQUIREMENTS.
- WHERE MOTION SENSORS ARE LOCATED AND INSTALLED, THEY SHALL BE 240V TYPE CHANNEL, UNLESS OTHERWISE INDICATED.
- ALL EXPOSED CABLING SHALL BE NEATLY INSTALLED WITHIN HD PVC CONDUIT AND PAINTED TO MATCH THE BUILDING FINISH. CONDUITS SHALL BE GLAND TO PROPRIETARY CONTAINMENT SYSTEMS AND FINAL OUTLETS.
- POSITIONS OF OUTLETS ARE INDICATIVE IN NATURE ONLY. FINAL QUANTITIES AND POSITIONS SHALL BE CONFIRMED WITH THE CLIENT AND ARCHITECT PRIOR TO COMMENCING WORKS ON SITE.
- ALL LIGHT SWITCHES, GPOS, ISOLATORS AND DATA OUTLETS ARE TO BE CLIPSLIP 2000 SERIES, WHITE AND LAMINATED PLASTIC ENGRAVED TO APPROVED SIZE, WORKING AND DESIGN, CLEARLY INDICATING THE FUNCTION AND/OR CIRCUIT DESIGNATION OF THE COMPONENT OF WHITE BACKGROUND WHITE WITH BLACK MACHINE ENGRAVED LETTERING FOR GENERAL ITEMS.
- THE ELECTRICAL CONTRACTOR SHALL CONTACT THE ELECTRICAL CONSULTANT DURING TENDER / PRICING A WEEK (7 DAYS) BEFORE SUBMISSION OF HIS TENDER / PRICING TO ENSURE ALL ITEMS ARE CORRECT AND INCLUDED FOR THE RESPECTIVE PROJECT.

Type	Luminaire Description	Manufacture / Model / Cat No	Picture of Luminaire	Lamp (Watts)	Lumen output	Lamp Colour (K)	IP rating	IK rating	CRI rating	Lifespan	Warranty	Ballast Type
C2	SURFACE MOUNTED 1200MM LINEAR BATTEN A	PROLIGHTING SOLUTIONS / 211022H		40W	5400Lm	4000K	65	8	80	50000Hrs	5yrs	INTEGRAL CCT WATTAGE SELECT NON DIM DRIVER
C2EM	SURFACE MOUNTED 1200MM LINEAR BATTEN WITH 2HR EMERGENCY BATTERY PACK	PROLIGHTING SOLUTIONS / 211022HEM		40W	5400Lm	4000K	65	8	80	50000Hrs	3yrs	INTEGRAL CCT WATTAGE SELECT NON DIM DRIVER C/W 2HR EMERGENCY PACK
D	SURFACE MOUNTED LED STRIP LIGHT IP65 - REFER TO ARCHITECT DETAILS FOR FINAL LOCATION	PROLIGHTING SOLUTIONS / PCP-4811812-3965193		19W	1342lm	3000K	67		90	25000Hrs	5yrs	REMOTE 24VDC DRIVER
H	SUSPENDED HIGHBAY	PROLIGHTING SOLUTIONS / 333324		70W	10500lm	4000K	65	N/A	80	50000Hrs	5yrs	INTEGRAL 1-10 VOLT DIMMABLE DRIVER
H1	SUSPENDED HIGHBAY WITH PRISMATIC DIFFUSER	PROLIGHTING SOLUTIONS / 333324-333319		70W	10500lm	4000K	65	N/A	80	50000Hrs	5yrs	INTEGRAL 1-10 VOLT DIMMABLE DRIVER
EM2	SURFACE 1200MM EMERGENCY FIXTURE WITH BATTERY PACK LINEAR LED	PROLIGHTING SOLUTIONS / 211022HEM		4W	N/A	N/A	65	N/A	N/A	50000Hrs	3yrs	INTEGRAL INVERTER & BATTERIES
EX	SURFACE MOUNTED 24M BLADE EXIT	PROLIGHTING SOLUTIONS / EXBLADELSM		3W	N/A	N/A	20	N/A	N/A	50000Hrs	3yrs	INTEGRAL INVERTER & BATTERIES



- NOTES**
- THE DELAY OFF RELAY SET TO 120 MINUTES.
 - PROVIDE SUFFICIENT QUANTITY OF CONTACTORS TO SERVE ALL EMERGENCY LIGHTING ACTIVE CIRCUITS.



- NOTES**
- THE PE CELL SERVING CONTACTOR GROUP (1) SHALL BE A LEGRAND.
 - THE TIME CLOCK SERVING CONTACTOR GROUP (2) SHALL BE A LEGRAND 2 HOUR.

NOTES

- INCLUDE WITHIN THE TENDER/CONSTRUCTION PRICE FOR THE FOLLOWING:
 - THE SUPPLY & INSTALLATION OF CONDUIT & PITS FOR THE TELSTRA/BNB NETWORK CARRIER INCOMING SERVICES.
 - ONLY TELSTRA/BNB ACCREDITED CONTRACTORS MAY SUPPLY & INSTALL THE INCOMING SERVICES IN ACCORDANCE WITH THE SERVICE CARRIERS RECOMMENDATIONS.
 - SUBMIT NBN APPLICATION TO NBN WITH NBN APPROVED DESIGN DRAWINGS (NBN FORMAT) FOR SERVICES REQUIRED.
- ELECTRICAL CONTRACTOR SHALL REFER TO WESTERN POWER DESIGN DRAWING(S) PRIOR TO MANUFACTURER AND INSTALLATION OF THE SMSB AND CONFIRM ALL SPD (QUANTITY), SPD SETTINGS, FAULT KA RATING, METER TYPE, CT'S TYPE ARE CORRECT AS PER WESTERN POWER DESIGN / SINGLE LINE ISSUED DRAWING.

ELECTRICAL CONTRACTOR SHALL COMPLY WITH ALL AUSTRALIAN STANDARDS AND NCC (BCA) STANDARDS INDICATED BUT NOT LIMITED TO THE SCHEDULE BELOW:

- AS/NZS3000 WIRING RULES
- AS3008.1 ELECTRICAL INSTALLATION - SELECTION OF CABLES
- AS2299.1 EMERGENCY LIGHTING IN BUILDINGS
- AS3090 TELECOMMUNICATIONS INSTALLATIONS
- AS 3098 TELECOMMUNICATIONS INSTALLATIONS - TELECOMMUNICATIONS PATHWAYS AND SPACES FOR COMMERCIAL BUILDINGS
- AS/NZS 3087.1 TELECOMMUNICATIONS INSTALLATIONS - GENERIC CABLING SYSTEMS - SPECIFICATION FOR THE TESTING OF BALANCED COMMUNICATION CABLEING
- AS/NZS 3087.2 TELECOMMUNICATIONS INSTALLATIONS - GENERIC CABLING SYSTEMS - SPECIFICATION FOR THE TESTING OF PATCH CORDS IN ACCORDANCE WITH AS/NZS 3088
- HB 243 COMMUNICATIONS CABLING MANUAL, MODULE 1: AUSTRALIAN REGULATORY ARRANGEMENTS
- AS/NZS 3098: TELECOMMUNICATIONS INSTALLATIONS - INTEGRATED TELECOMMUNICATIONS CABLING SYSTEMS FOR SMALL OFFICE/HOME OFFICE PREMISES
- AS/NZS 3099 INSTALLATION REQUIREMENTS FOR CUSTOMER CABLING (WIRING RULES)
- AS/NZS 3098 REQUIREMENTS FOR AUTHORISED CABLING PRODUCTS
- AS/NZS 3098 REGULATIONS AND STANDARDS
- HB 29 COMMUNICATIONS CABLING MANUAL (CCM)
- TS 010 GENERAL PREMISES AND DOMESTIC CABLE INSTALLERS LICENSE AND INSPECTION REQUIREMENTS
- TS 011 ABBREVIATIONS, DEFINITIONS AND TERMS USED IN TECHNICAL STANDARDS
- AS2021 INTRUDER ALARM SYSTEMS
- AS1670 FIRE DETECTION, WARNING, CONTROL AND INTERCOM SYSTEMS SYSTEM DESIGN, INSTALLATION AND COMMISSIONING - FIRE
- AS1428:2021 ACCESS AND MOBILITY STANDARD
- WESTERN POWER REGULATIONS AND STANDARDS
- OFFICE OF ENERGY WAER AND OTHER APPLICABLE DOCUMENTS
- ASA REGULATIONS
- LOCAL BUILDING AUTHORITIES
- FESA
- BUILDING CODE OF AUSTRALIA (BCA AND NCC)
- WORKSAFE AUSTRALIA

NOTE

ELECTRICAL CONTRACTOR AND SWITCHBOARD MANUFACTURER SHALL REFER TO ALL WESTERN POWER DESIGN DRAWING(S) PRIOR TO ISSUING SHOP DRAWINGS, MANUFACTURING AND INSTALLATION OF THE SMSB AND CONFIRM ALL SPD (QUANTITY), SPD SETTINGS, SMSB / SPD FAULT KA RATING, METER TYPE, CT'S TYPE, ECT. ARE CORRECT AND COMPLIANT AS PER WESTERN POWER DESIGN DRAWING FOR THIS PROJECT / WESTERN POWER SINGLE LINE ISSUED DRAWING / WESTERN POWER STANDARDS.

TENDER ISSUE
REFER TO REVISION COLUMN

0	TENDER AND CDC ISSUE	21/02/25	EHK
REV	DETAILS	DATE	BY

SEM Engineering Consultants
Ph: +61 8 99 99 21 91
E: deon@semconsultants.com
W: www.semconsultants.com

MCG Architects Pty Ltd
The Block 311 Flinders Street Building
© Copyright MCG Architects Pty Ltd
T 08 9439 1000 E enquiries@mcp.com.au

WAROONA
SEA TO SEA

CLIENT
SHIRE OF WAROONA

PROJECT TITLE
WAROONA BIG SHED
93 S WESTERN HIGHWAY,
WAROONA, 6215

DRAWING TITLE
ELECTRICAL SERVICES

LEGEND & DETAILS

DESIGN	D.K.	DATE	12 July 2024
DRAWN	E.H.K.	SCALE	N.T.S. (A1)
COPYRIGHT	PROJECT NUMBER		
	P2024-030		
	DRAWING NUMBER/REV		
	E 000 0		

ELECTRICAL CONTRACTOR AND SWITCHBOARD MANUFACTURER SHALL REFER TO ALL WESTERN POWER DESIGN DRAWING(S) FOR THIS PROJECT PRIOR TO SHOP DRAWINGS, MANUFACTURING AND INSTALLATION OF THE SMSB AND CONFIRM ALL SPD (QUANTITY), SPD SETTINGS, FAULT KA RATING, METER TYPE, CT'S TYPE, ECT. ARE CORRECT AND COMPLIANT AS PER WESTERN POWER DESIGN DRAWING FOR THIS PROJECT / WESTERN POWER SINGLE LINE ISSUED DRAWING / WESTERN POWER STANDARDS.