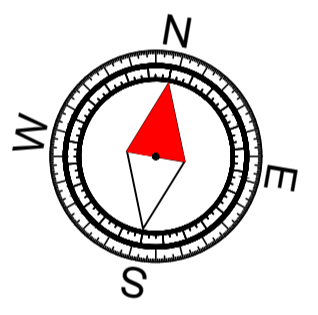


- AS/NZS3000 WIRING RULES
- AS3008.1 ELECTRICAL INSTALLATION - SELECTION OF CABLES
- AS2293.1 EMERGENCY LIGHTING IN BUILDINGS
- AS3080 TELECOMMUNICATIONS INSTALLATIONS
- AS 3084 TELECOMMUNICATIONS INSTALLATIONS - TELECOMMUNICATIONS PATHWAYS AND SPACES FOR COMMERCIAL BUILDINGS
- AS/NZS 3087.1 TELECOMMUNICATIONS INSTALLATIONS - GENERIC CABLING SYSTEMS - SPECIFICATION FOR THE TESTING OF BALANCED COMMUNICATION CABLING
- AS/NZS 3087.2 TELECOMMUNICATIONS INSTALLATIONS - GENERIC CABLING SYSTEMS - SPECIFICATION FOR THE TESTING OF PATCH CORDS IN ACCORDANCE WITH AS/NZS 3086
- HB 243 COMMUNICATIONS CABLING MANUAL, MODULE 1: AUSTRALIAN REGULATORY ARRANGEMENTS
- AS/NZS 3086: TELECOMMUNICATIONS INSTALLATIONS - INTEGRATED TELECOMMUNICATIONS CABLING SYSTEMS FOR SMALL OFFICE/HOME OFFICE PREMISES
- AS/ACIF 509 INSTALLATION REQUIREMENTS FOR CUSTOMER CABLING (WIRING RULES)
- AS/ACIF 508 REQUIREMENTS FOR AUTHORISED CABLING PRODUCTS
- AS/ACIF REGULATIONS AND STANDARDS
- HB 29 COMMUNICATIONS CABLING MANUAL (CCM)
- TS 010 GENERAL PREMISES AND DOMESTIC CABLE INSTALLERS' LICENSE AND INSPECTION REQUIREMENTS
- TS 011 ABBREVIATIONS, DEFINITIONS AND TERMS USED IN TECHNICAL STANDARDS
- AS/ISO1 INTRUDER ALARM SYSTEMS
- AS1670 FIRE DETECTION, WARNING, CONTROL AND INTERCOM SYSTEMS SYSTEM DESIGN, INSTALLATION AND COMMISSIONING - FIRE
- AS1428: 2021 ACCESS AND MOBILITY STANDARD
- WESTERN POWER REGULATIONS AND STANDARDS
- OFFICE OF ENERGY WAER, AND OTHER APPLICABLE DOCUMENTS
- ASA REGULATIONS
- LOCAL BUILDING AUTHORITIES
- FESA
- BUILDING CODE OF AUSTRALIA (BCA AND NCC)
- WORKSAFE AUSTRALIA

### NOTE

ELECTRICAL CONTRACTOR AND SWITCHBOARD MANUFACTURER SHALL REFER TO ALL WESTERN POWER DESIGN DRAWING(S) PRIOR TO ISSUING SHOP DRAWINGS, MANUFACTURING AND INSTALLATION OF THE SMSB AND CONFIRM ALL SPD QUANTITY, SPD SETTINGS, SMSB / SPD FAULT IKA RATING, METER TYPE, CTS TYPE, ETC ARE CORRECT AND COMPLIANT AS PER WESTERN POWER DESIGN DRAWING FOR THIS PROJECT / WESTERN POWER SINGLE LINE ISSUED DRAWING / WESTERN POWER STANDARDS.



**TENDER ISSUE**  
REFER TO REVISION COLUMN

REV	DETAILS	DATE	BY
0	TENDER AND CDC ISSUE	21/02/25	EHK

SEM Engineering Consultants  
Ph: +61 8 99 99 21 91  
E: [deon@semconsultants.com](mailto:deon@semconsultants.com)  
W: [www.semconsultants.com](http://www.semconsultants.com)

**MCG Architects** Pty Ltd  
The Shop, 91 Rennie Street, Perth  
© Copyright MCG Architects Pty Ltd  
T 08 9439 3333 E [enquiries@mcparchitects.com.au](mailto:enquiries@mcparchitects.com.au)



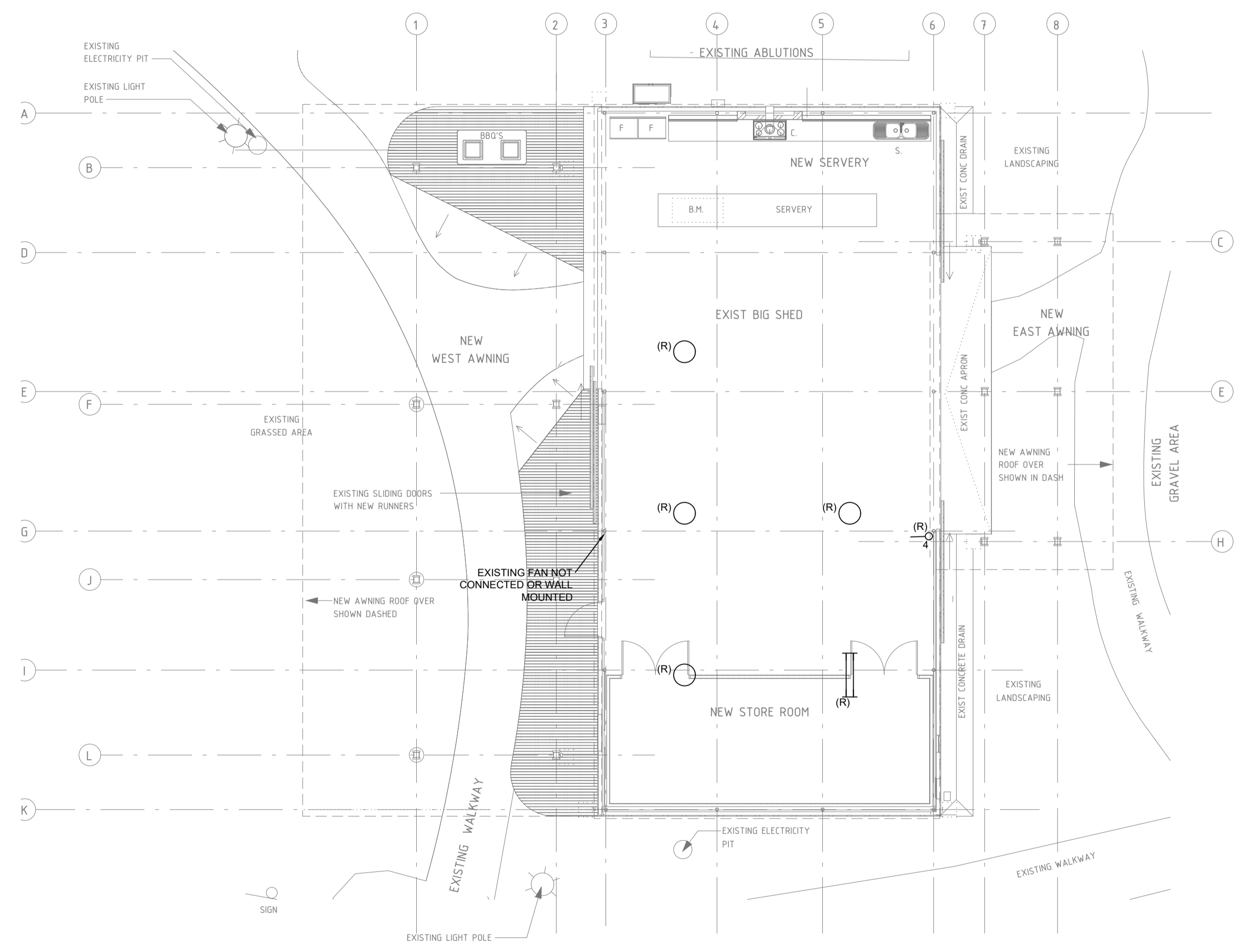
**CLIENT**  
SHIRE OF WAROONA

**PROJECT TITLE**  
WAROONA BIG SHED  
93 S WESTERN HIGHWAY,  
WAROONA, 6215

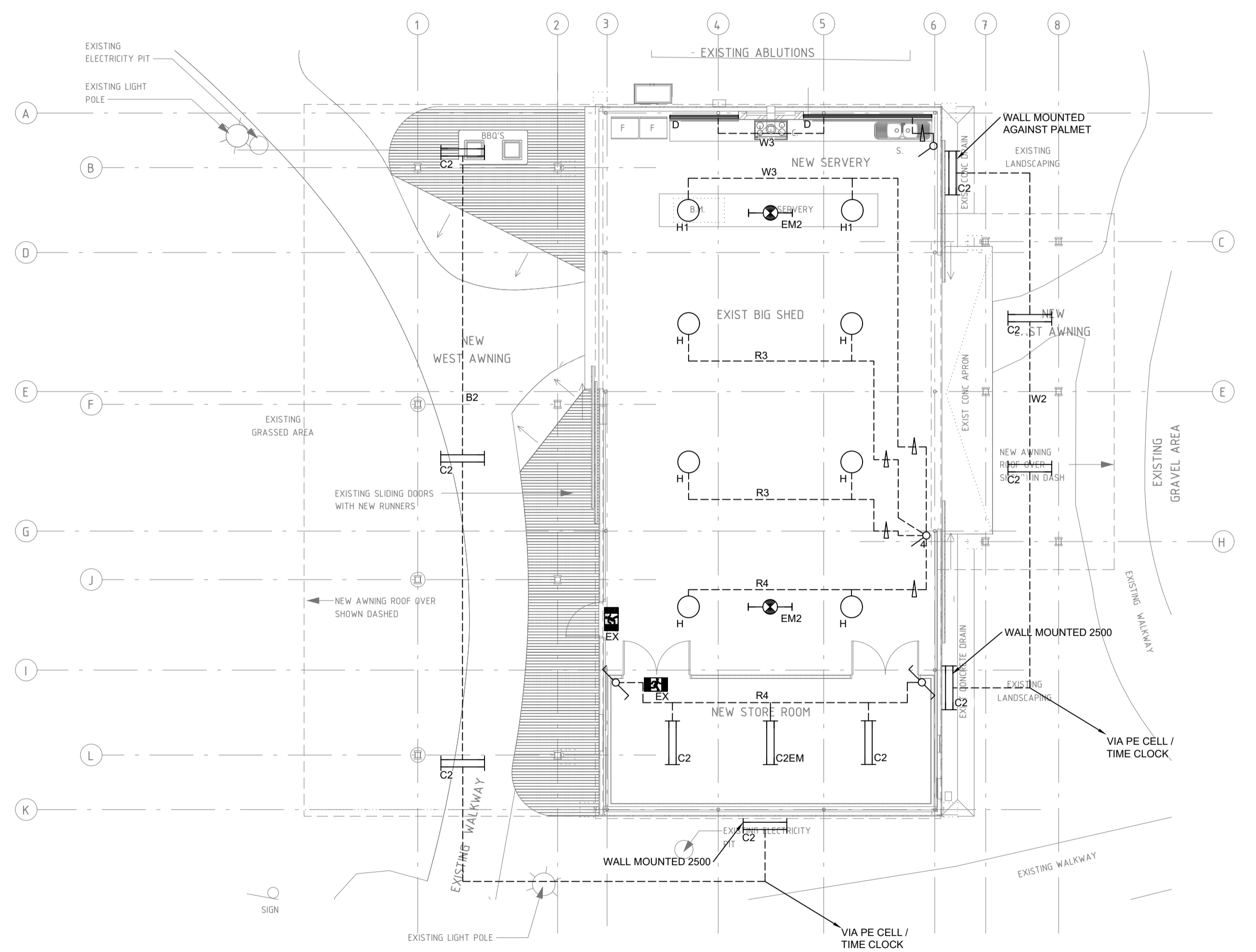
**DRAWING TITLE**  
ELECTRICAL SERVICES  
LIGHTING & FIRE DETECTION  
LAYOUT

DESIGN	D.K.	DATE	12 July 2024
DRAWN	E.H.K.	SCALE	1:100 (A1)

COPYRIGHT	PROJECT NUMBER
© 2024 SEM Engineering Consultants	P2024-030
DRAWING NUMBER	REV
E 200	0



**EXISTING LIGHTING & FIRE DETECTION**



**PROPOSED LIGHTING & FIRE DETECTION**