

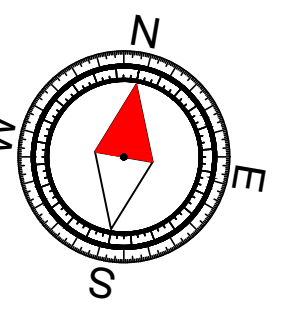
NOTES

1. SOLAR DETAILS AS FOLLOW:
 - 1.1. SOLAR PV ARRAY PANELS SIMILAR OR APPROVED TO VERTEX S - 425W+ (PRODUCT TSM-DE09R.05).
 - 1.2. SOLAR INVERTER SIMILAR OR APPROVED TO SOLAREEDGE - SE15K.

- ELECTRICAL CONTRACTOR SHALL COMPLY WITH ALL AUSTRALIAN STANDARDS AND NCC (BCA) STANDARDS INDICATED BUT NOT LIMITED TO THE SCHEDULE BELOW:
- AS/NZS3000 WIRING RULES
 - AS3008.1 ELECTRICAL INSTALLATION - SELECTION OF CABLES
 - AS2293.1 EMERGENCY LIGHTING IN BUILDINGS
 - AS3080 TELECOMMUNICATIONS INSTALLATIONS
 - AS 3084 TELECOMMUNICATIONS INSTALLATIONS - TELECOMMUNICATIONS PATHWAYS AND SPACES FOR COMMERCIAL BUILDINGS
 - AS/NZS 3087.1 TELECOMMUNICATIONS INSTALLATIONS - GENERIC CABLING SYSTEMS - SPECIFICATION FOR THE TESTING OF BALANCED COMMUNICATION CABLING.
 - AS/NZS 3087.2 TELECOMMUNICATIONS INSTALLATIONS - GENERIC CABLING SYSTEMS - SPECIFICATION FOR THE TESTING OF PATCH CORDS IN ACCORDANCE WITH AS/NZS 3086
 - HB 243 COMMUNICATIONS CABLING MANUAL, MODULE 1: AUSTRALIAN REGULATORY ARRANGEMENTS
 - AS/NZS 3086: TELECOMMUNICATIONS INSTALLATIONS - INTEGRATED TELECOMMUNICATIONS CABLING SYSTEMS FOR SMALL OFFICE/HOME OFFICE PREMISES
 - AS/ACIF 509 INSTALLATION REQUIREMENTS FOR CUSTOMER CABLING (WIRING RULES)
 - AS/ACIF 508 REQUIREMENTS FOR AUTHORISED CABLING PRODUCTS
 - AS/ACIF REGULATIONS AND STANDARDS
 - HB 29 COMMUNICATIONS CABLING MANUAL (CCM)
 - TS 010 GENERAL PREMISES AND DOMESTIC CABLE INSTALLERS' LICENSE AND INSPECTION REQUIREMENTS
 - TS 011 ABBREVIATIONS, DEFINITIONS AND TERMS USED IN TECHNICAL STANDARDS
 - AS2021 INTRUDER ALARM SYSTEMS
 - AS1670 FIRE DETECTION, WARNING, CONTROL AND INTERCOM SYSTEMS SYSTEM DESIGN, INSTALLATION AND COMMISSIONING - FIRE
 - AS1428-2021 ACCESS AND MOBILITY STANDARD
 - WESTERN POWER REGULATIONS AND STANDARDS
 - OFFICE OF ENERGY WATER AND OTHER APPLICABLE DOCUMENTS
 - ASA REGULATIONS
 - LOCAL BUILDING AUTHORITIES
 - FESA
 - BUILDING CODE OF AUSTRALIA (BCA AND NCC)
 - WORKSAFE AUSTRALIA

NOTE

ELECTRICAL CONTRACTOR AND SWITCHBOARD MANUFACTURER SHALL REFER TO ALL WESTERN POWER DESIGN DRAWING(S) PRIOR TO ISSUING SHOP DRAWINGS, MANUFACTURING AND INSTALLATION OF THE SMSB AND CONFIRM ALL SPD QUANTITY, SPD SETTINGS, SMSB / SPD FAULT IKA RATING, METER TYPE, CTS TYPE, ETC ARE CORRECT AND COMPLIANT AS PER WESTERN POWER DESIGN DRAWING FOR THIS PROJECT. WESTERN POWER SINGLE LINE ISSUED DRAWING / WESTERN POWER STANDARDS.



TENDER ISSUE
REFER TO REVISION COLUMN

| REV | DETAILS | DATE | BY |
|-----|----------------------|----------|-----|
| 0 | TENDER AND CDC ISSUE | 21/02/25 | EHK |

SEM Engineering Consultants
 P: +61 8 99 99 21 91
 E: deon@semconsultants.com
 W: www.semconsultants.com

MCG Architects Pty Ltd
 The Shop 01/1000, 1000, 1000
 © 2024 MCG Architects Pty Ltd
 T: 08 9391 9333 E: enquiries@mcparchitects.com.au



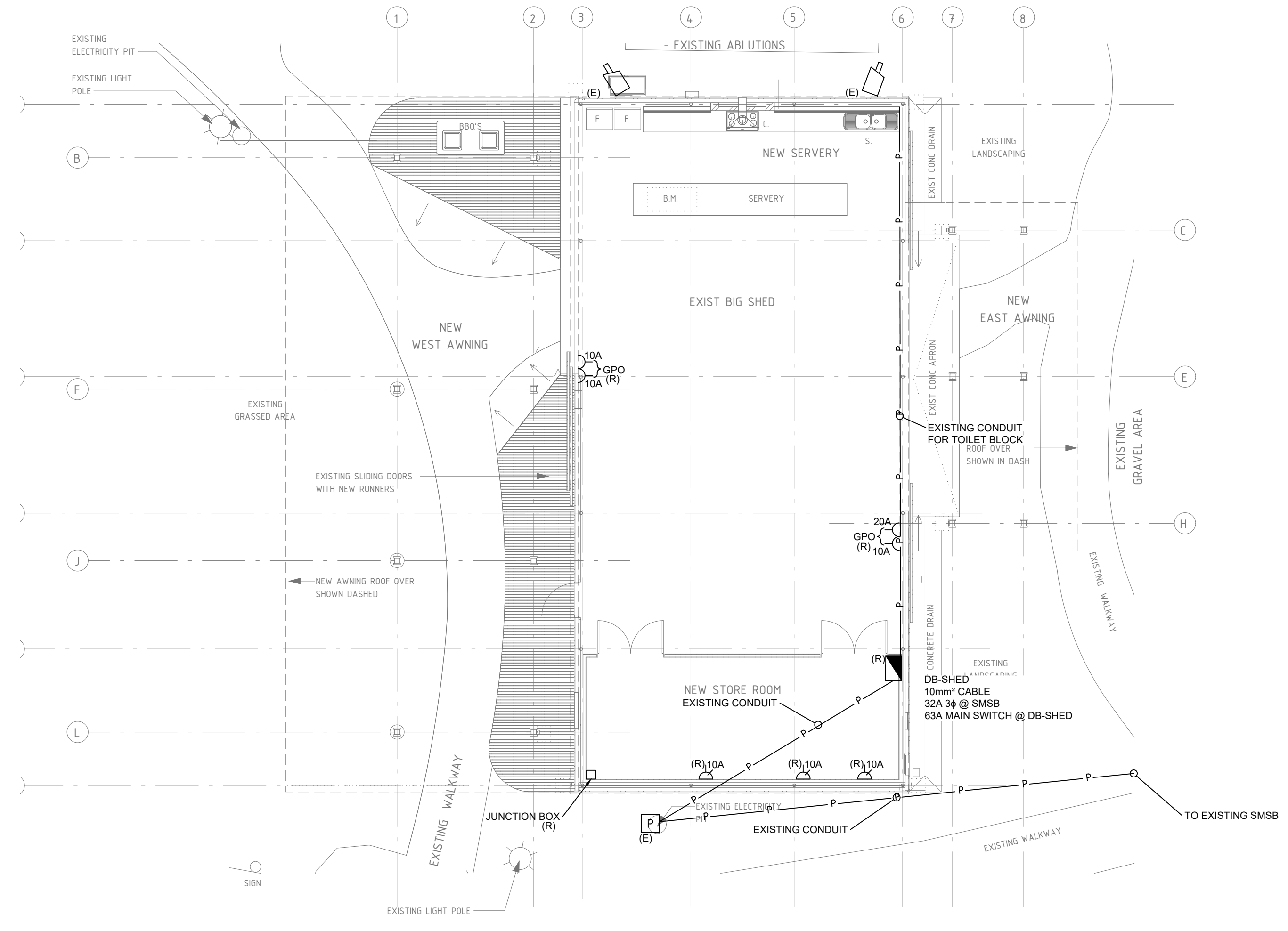
CLIENT
SHIRE OF WAROONA

PROJECT TITLE
WAROONA BIG SHED
93 S WESTERN HIGHWAY,
WAROONA, 6215

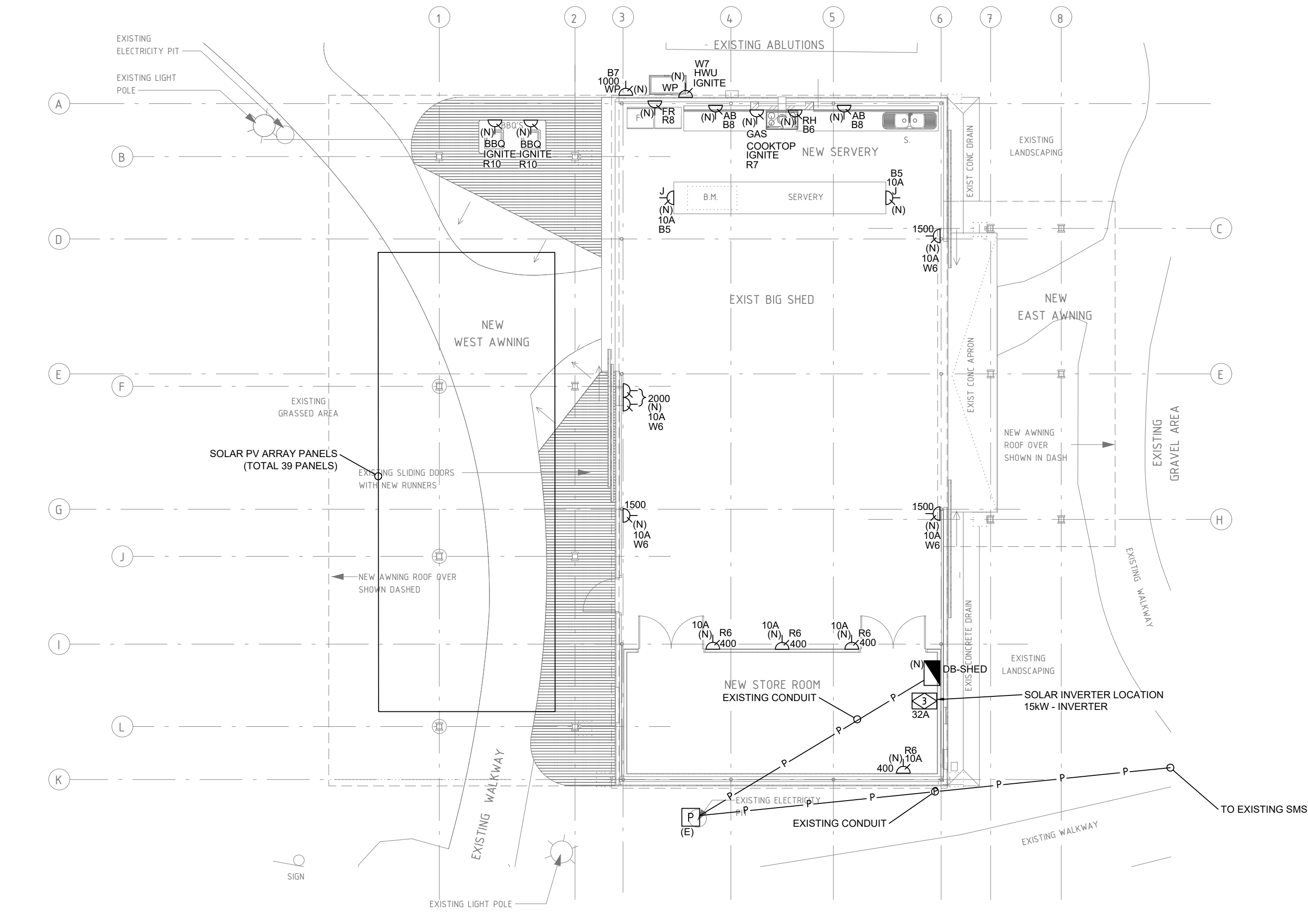
DRAWING TITLE
ELECTRICAL SERVICES
POWER, COMMS & MISC
LAYOUT

| | | | |
|--------|--------|-------|--------------|
| DESIGN | D.K. | DATE | 12 July 2024 |
| DRAWN | E.H.K. | SCALE | 1:100 (A1) |

| | |
|-----------------------------|----------------|
| COPYRIGHT | PROJECT NUMBER |
| SEM Engineering Consultants | P2024-030 |
| DRAWING NUMBER | REV |
| E 300 | 0 |



EXISTING POWER, COMMS & MISC



PROPOSED POWER, COMMS & MISC